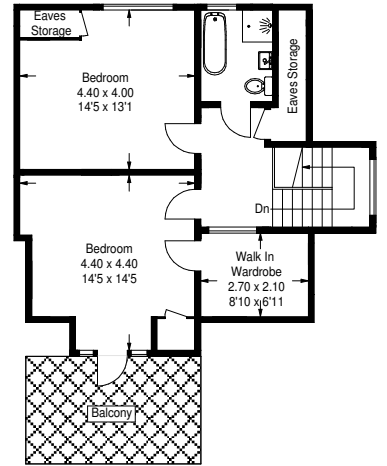
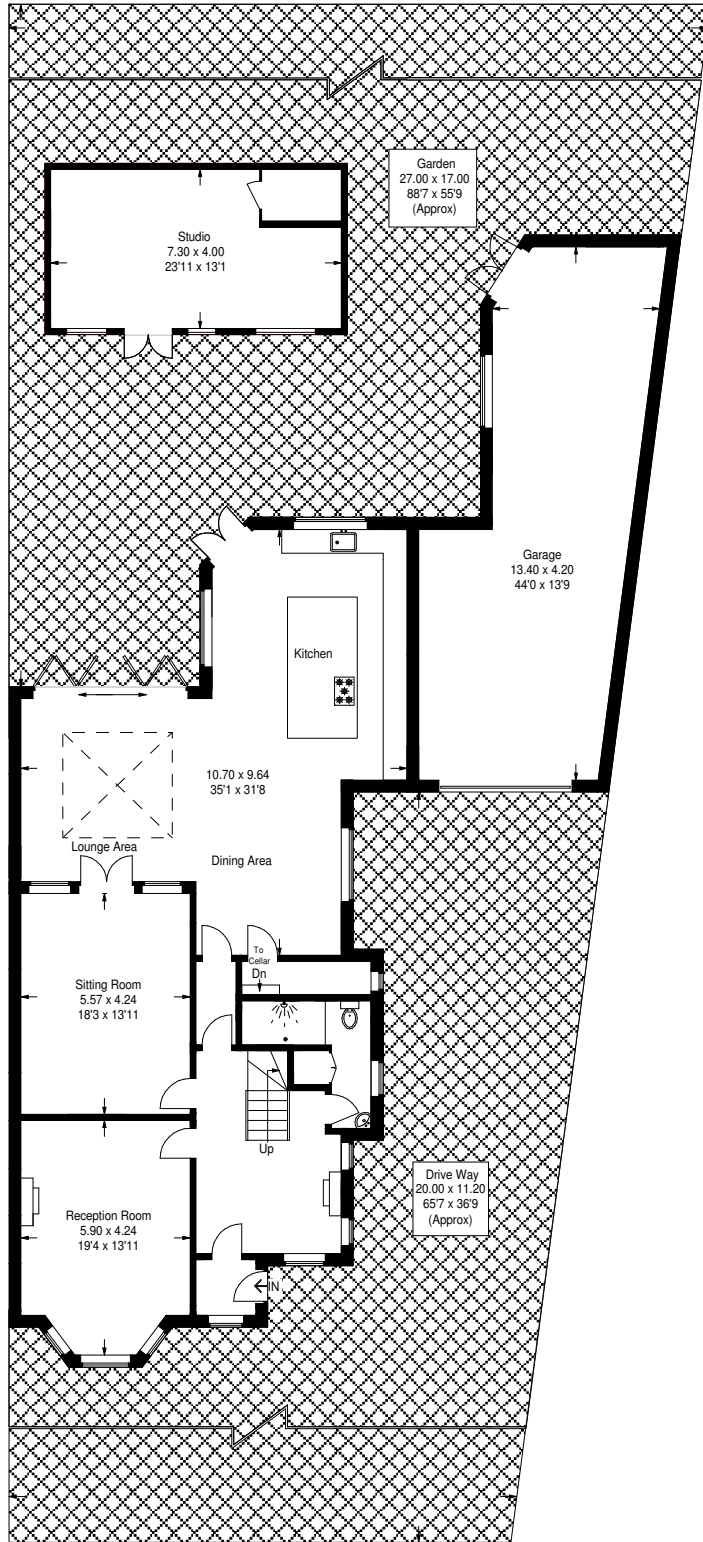
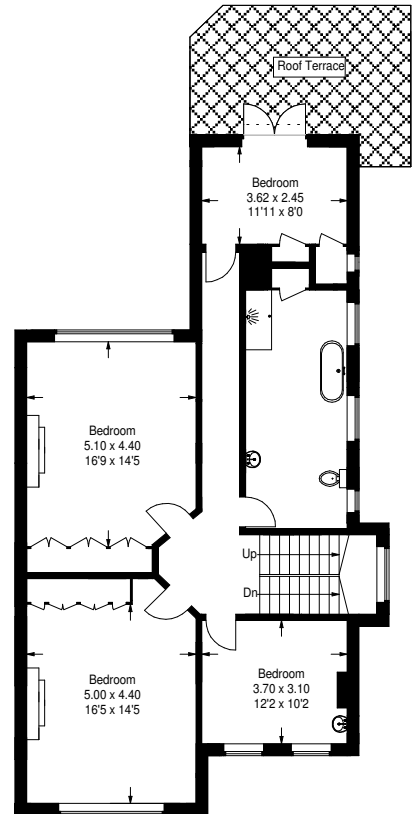


Park Road

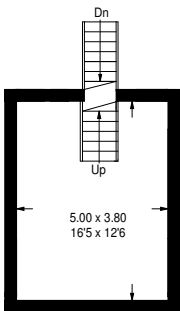
Approximate Gross Internal Area = 319.9 sq m / 3443 sq ft
 Cellar = 19 sq m / 204 sq ft
 Garage = 58.5 sq m / 630 sq ft
 Studio = 29.2 sq m / 314 sq ft
 Total = 426.6 sq m / 4591 sq ft



Top Floor = 60.7 sq m / 653 sq ft



First Floor = 107.4 sq m / 1156 sq ft



Cellar = 19 sq m / 204 sq ft

Ground Floor = 151.8 sq m / 1634 sq ft